

  
**accelerated**<sup>TM</sup>

# 6300-LX

## USB Router



## Welcome

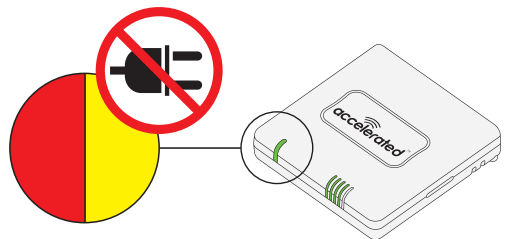
Thank you for purchasing the Accelerated 6300-LX USB Router. Before beginning your setup please familiarize yourself with the package contents (see reverse side) and download and review the 6300-LX User's Guide at [Accelerated.com/6300-LX/guide](http://Accelerated.com/6300-LX/guide).

For more Product Documentation and Support information visit:

[Accelerated.com/6300-LX/doc](http://Accelerated.com/6300-LX/doc)

[Accelerated.com/6300-LX/support](http://Accelerated.com/6300-LX/support)

**CAUTION:**  
IF FLASHING RED/YELLOW  
DO NOT REMOVE POWER

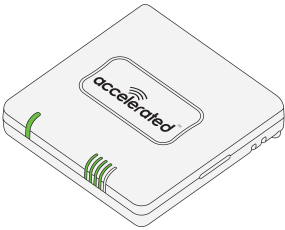




If the contents are incomplete contact us at: [Support@Accelerated.com](mailto:Support@Accelerated.com)

## PACKAGE CONTENTS OF THE 6300-LX

**1** 6300-LX Unit



**2** Power Supply Unit



**3** Temporary Battery Pack



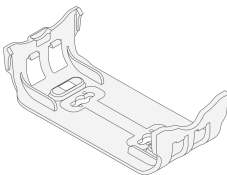
**4** Ethernet Cable



**5** Passive Power over Ethernet (PoE) Injector Cable



**6** Mounting Bracket



**7** 4 Ceiling Rail Clips;  
2 Screws & Drywall Anchors

2 Narrow clips



2 Screws



2 Wide clips



2 Drywall Anchors



**8** Velcro Strip



**9** 2 Zip Ties

