



Accelerated Cellular Extender: Model 6200-FX Accelerated View™ Remote Management

Jason Dorough
VP of Sales
Jason.dorough@accelecon.com
+1-813-699-3104



Accelerated 6200-FX Solution Overview

Accelerated Cellular Extenders are designed to address the Fixed Cellular Data requirements of Enterprise Customers

Maximize Signal Strength

- » Locate where signal strength is best - often eliminating need for external antenna
- » Connect to router via Ethernet (up to 300')
- » Passive PoE injector cable for easy installation
- » Temporary battery pack (optional) for site survey

Rapid Technology Adoption

- » Supports the latest USB Cellular Modems
- » No time to market lag due to embedded radio development and cert.
- » New cards are supported via a firmware upgrade
- » Existing units can be upgraded to support latest technology
- » Multi-provider support

Enterprise Ready

- » Accelerated View™ provides centralized monitoring and remote control
- » Dedicated heartbeat processor monitors health and resets device or USB Modem
- » Supports Transparent Bridge, Router or Tunneling Modes

Potential Customer Applications

The Accelerated Cellular Extender: Model 6200-FX can be used for Primary or Backup Fixed Cellular Data

Retail / Branch Office

- » Cellular Data Backup
- » Primary Cellular Data for quick turn up of seasonal locations



Kiosk and Digital Signage

- » Primary Cellular Data
- » Payment Processing
- » Real Time Information
- » Digital Signage



POS

- » Primary Cellular Data
- » Credit Card Processing
- » Cash Register

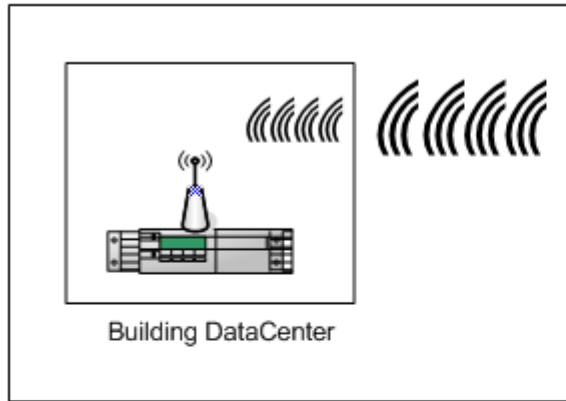


Accelerated Cellular Extender: 6200-FX

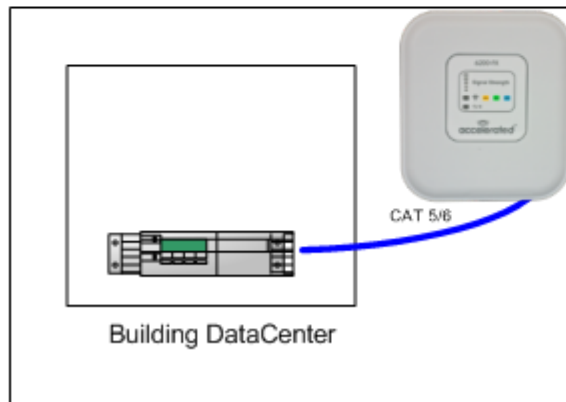
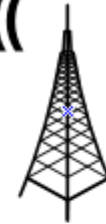
- » Central Monitoring & Control through Accelerated View™
- » Hardware Heartbeat and Recovery
- » Supports extensive list of USB Modems
- » 2 USB Ports (1 internal, 1 external)
- » 1 Ethernet port
- » Included PoE injector for optimal placement
- » Optional Temporary battery pack for single Carrier site survey



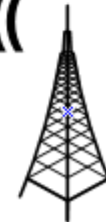
Deployment Comparison



Traditional fixed wireless routers are designed to be collocated with wired network equipment. Often resulting in a weak cellular signal. External antennas add expense and are marginally effective



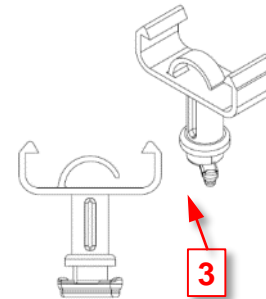
The Accelerated 6200-FX is designed to be optimally located to maximize signal strength. The 6200-FX's signal strength indicator and the Accelerated View™ are used for precise placement



Accelerated 6200-FX Mounting Options



1. Dry Wall Screw Holes
2. Zip Tie Hanger Slots
3. Drop Ceiling Rail Hanger Snaps; two sizes fit standard drop ceiling rails
4. Drop Ceiling Rail Hanger Snaps [3] fit into Screw Holes [1] and lock into place with a 1/8 clockwise turn



Accelerated Cellular Extender Benefits

- » Enterprise Ready
 - ▶ Accelerated View™ provides centralized monitoring and control
 - ▶ Dedicated heartbeat processor monitors health and resets device or USB Modem
- » Supports Transparent Bridge, Router or Tunneling Modes
- » Rapid Technology Adoption
 - ▶ Supports the latest USB Cellular Modems
 - ▶ No time to market lag due to embedded module development and certification
 - ▶ Can be upgraded to support latest technology
 - ▶ Multi-Carrier support
- » Remote PoE Power Injector allows for easy installation and optimal placement



Case Study for a Large Retailer

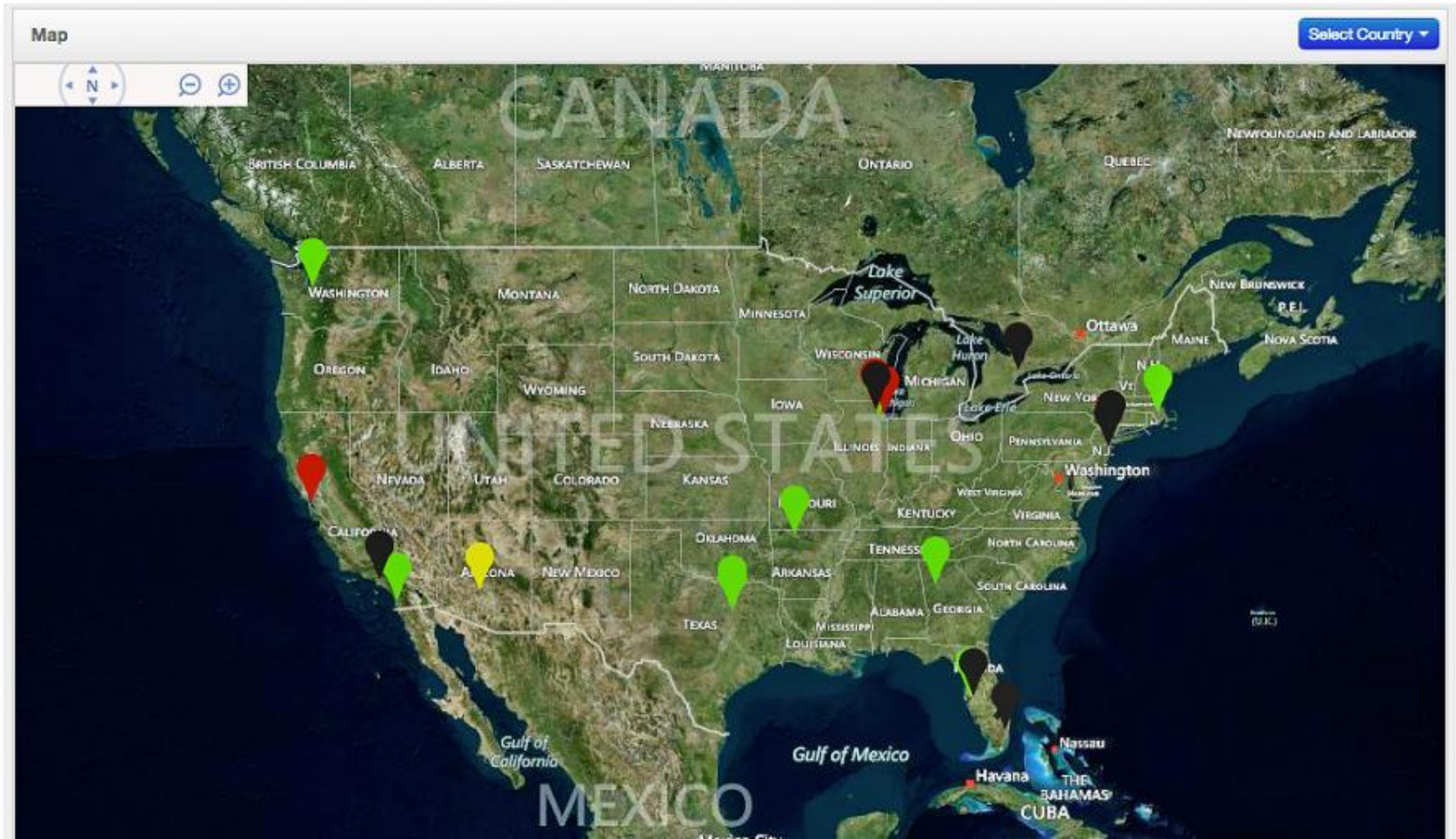
Business Challenges	<ul style="list-style-type: none">» 700 Temporary Stores needed for Christmas Season» Reliable wireless network coverage required for Point of Sale and Inventory applications» Initial tests resulted in <30% coverage with preferred Carrier when cellular radio was collocated with router
Accelerated Solution	<ul style="list-style-type: none">» Accelerated Cellular Extender used to optimize Wireless signal strength» Accelerated View™ to manage 700 locations
Customer Benefit	<ul style="list-style-type: none">» Wireless coverage increased to >85% with preferred Carrier» Successful wireless network deployment» Customer captured significant market penetration at a peak time in their sales year

Accelerated View™ Remote Management

Accelerated View™ - Overview

- » Cloud-based system to Monitor and Remotely Control AT&T VPN Gateways, Accelerated Wi-Fi Extenders and Cellular Extenders; extensible to other SNMP devices
- » Powerful intuitive user interface allows sorting, filtering and searching in order to improve productivity and identify problem patterns
- » Hierarchical design, based on concept of Organizations, allows flexible network segregation and monitoring
- » Instant view of Availability, Performance, Configuration and Location
- » Map view easily identifies all devices in alert status
- » Real-time device events track device status and error conditions - Alerts can be sent to e-mail or SMS
- » Remote Control allows Configuration changes, Firmware updates and Reboots to authorized users

Accelerated View™ – Map View



Accelerated View™ – Device View

accelerated

Search here...

Cellular NetBridge FX 002704010008

Home / Devices / Cellular / NetBridge FX / 002704010008

Admin Panel [Undeploy](#) [Replay](#)

Organization: Overbay

Configuration: Default [Current](#)

Hostname: Hostname

Site ID: Chicago Branch

[Update](#) [Cancel](#)

Details

Status: Up

MAC Address: 002704010008

Modem: 17

Cellular Host: 10.72.231.127

Last Heartbeat: Jun 29 2015 06:43:14 (COT)

Firmware Version: 2.162.51

Last Restart: Jun 29 2013 01:21:30 (COT)

Modem: Sierra Wireless 312u

Carrier: AT&T

Signal Strength: 48%

Phone Number: 18134708272

IMEI: 012615000651449

ESN:

ICCID: 89014104254743446224

Revision: SW19200X_01.00.03.01AP

APN: broadband

ECID: N/A

CNT: LTE

Location

1208 E. Kennedy

Subs Number

Tampa

50602

United States

[Update](#) [Clear](#)

Contacts [Add Contact](#)

General Sid Overbay sidney.overbay@accelcon.com

Accelerated View™ – Analytics

